

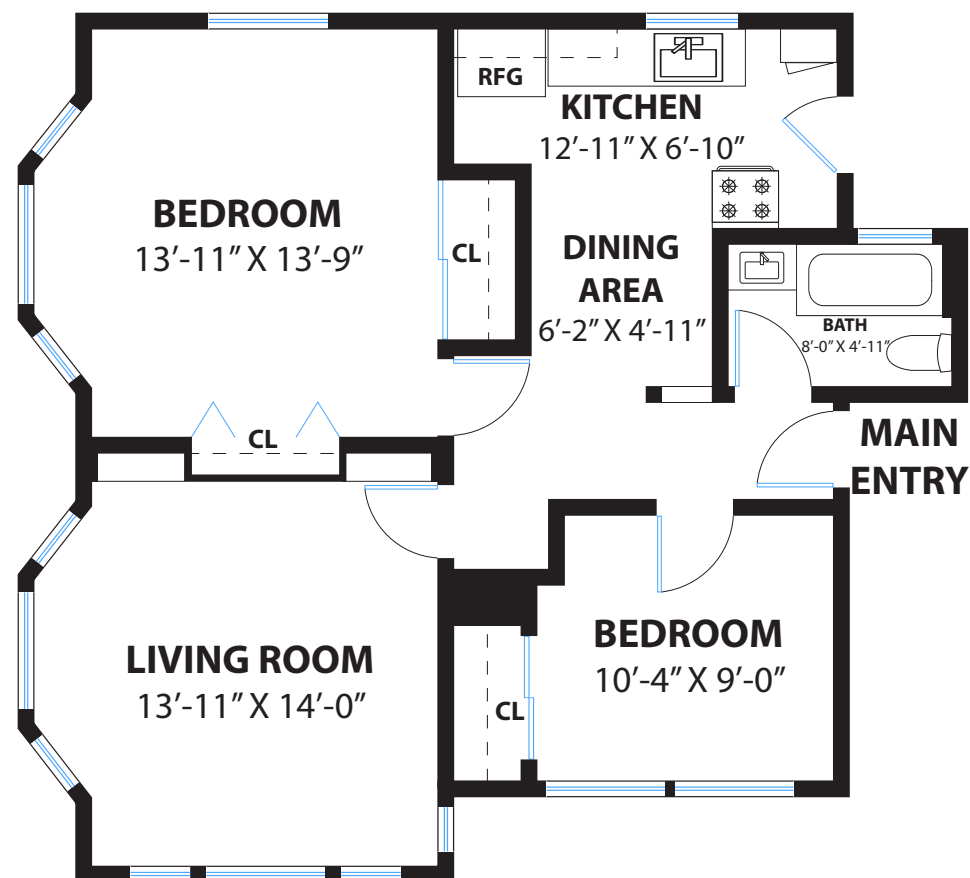
# 455 41ST STREET OAKLAND

## PROPERTY SQ FT INFORMATION

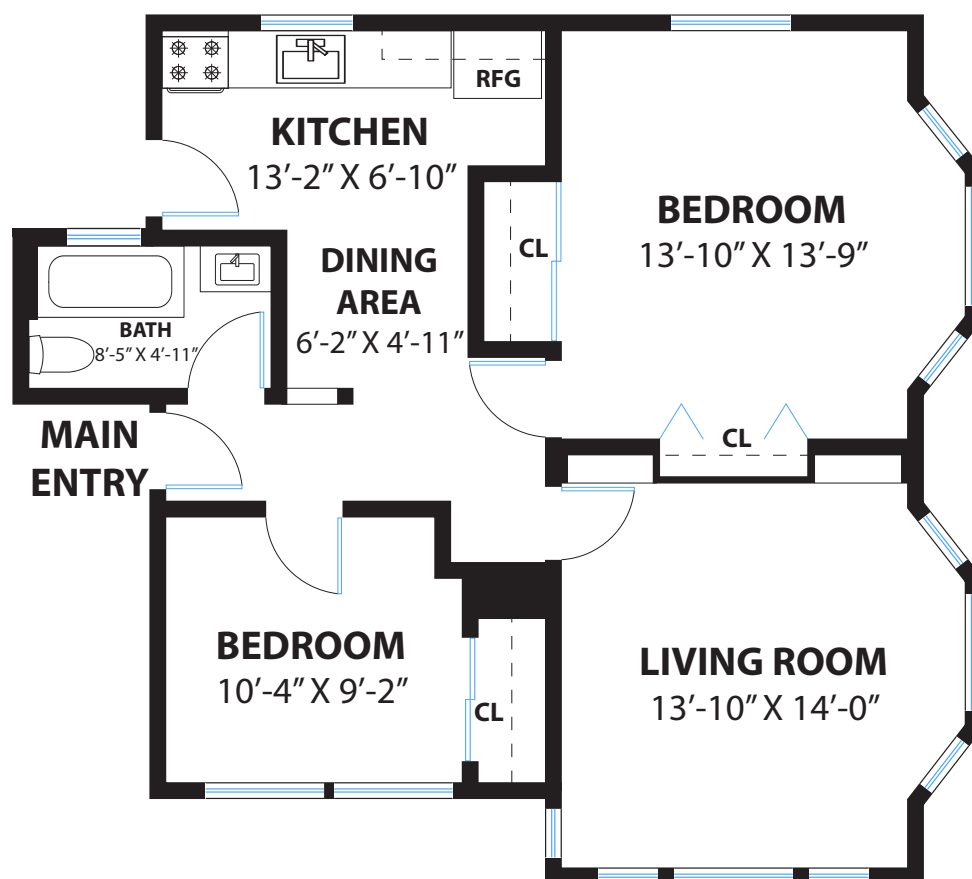
MEASUREMENTS CALCULATED TO THE INTERIOR WALLS

### LIVING SPACE: 1460 SQ FT

- \* Main House (Main Level Unit #1): 732 Sq Ft
- \* Main House (Main Level Unit #4): 728 Sq Ft



MAIN LEVEL UNIT #4



MAIN LEVEL UNIT #1

**PRESENTED BY : SHELLY FLYNN / BARRY KLEIN**

**DRE #: 01479075 / 00849720**

DISCLAIMER: RENDERING BY OPEN HOMES PHOTOGRAPHY. ALL MEASUREMENTS ARE APPROXIMATE AND MAY NOT BE EXACT.  
DO NOT RELY ON THE ACCURACY OF THIS FLOOR PLAN WHEN DETERMINING THE PRICE OF A PROPERTY OR MAKING DECISIONS  
REGARDING BUYING OR SELLING OF PROPERTIES WITHOUT INDEPENDENT VERIFICATION.