

COMPASS

450 LOS PALMOS DRIVE

SAN FRANCISCO

PROPERTY SQ FT INFORMATION

MEASUREMENTS CALCULATED TO THE EXTERIOR WALLS

- LIVING SPACE: 1676 SQ FT
- * Main House (Level One): 192 Sq Ft

* Main House (Level Two): 736 Sq Ft

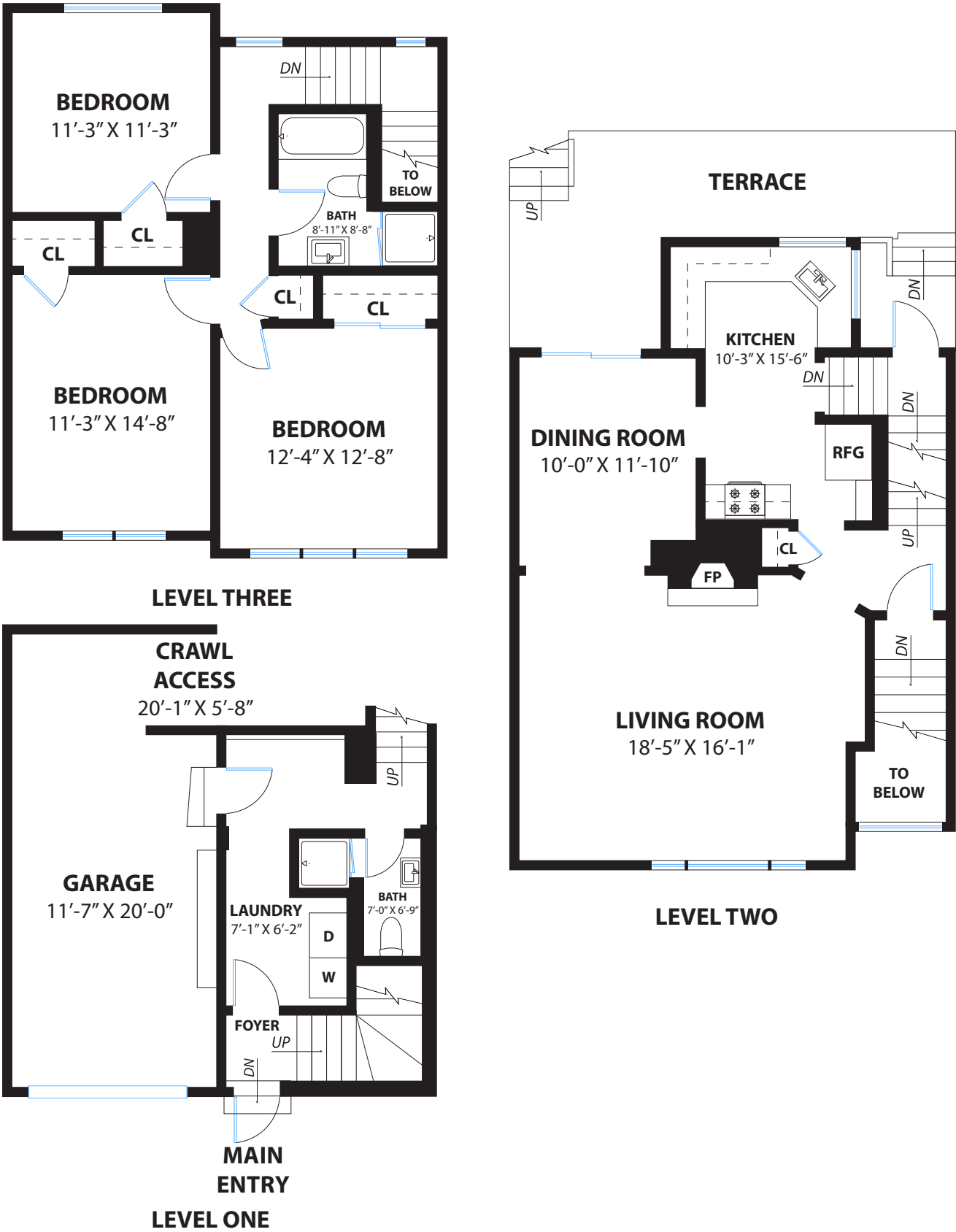
* Main House (Level Three): 748 Sq Ft

- NON-LIVING SPACE: 608 SQ FT
- * Level One Garage: 324 Sq Ft

* Level One Foyer: 67 Sq Ft

* Level Two Terrace: 217 Sq Ft

COMBINED: 2284 Sq Ft



PRESENTED BY : SHANNON HUGHES

DRE #:1886268

DISCLAIMER: RENDERING BY OPEN HOMES PHOTOGRAPHY. ALL MEASUREMENTS ARE APPROXIMATE AND MAY NOT BE EXACT.
DO NOT RELY ON THE ACCURACY OF THIS FLOOR PLAN WHEN DETERMINING THE PRICE OF A PROPERTY OR MAKING DECISIONS
REGARDING BUYING OR SELLING OF PROPERTIES WITHOUT INDEPENDENT VERIFICATION.