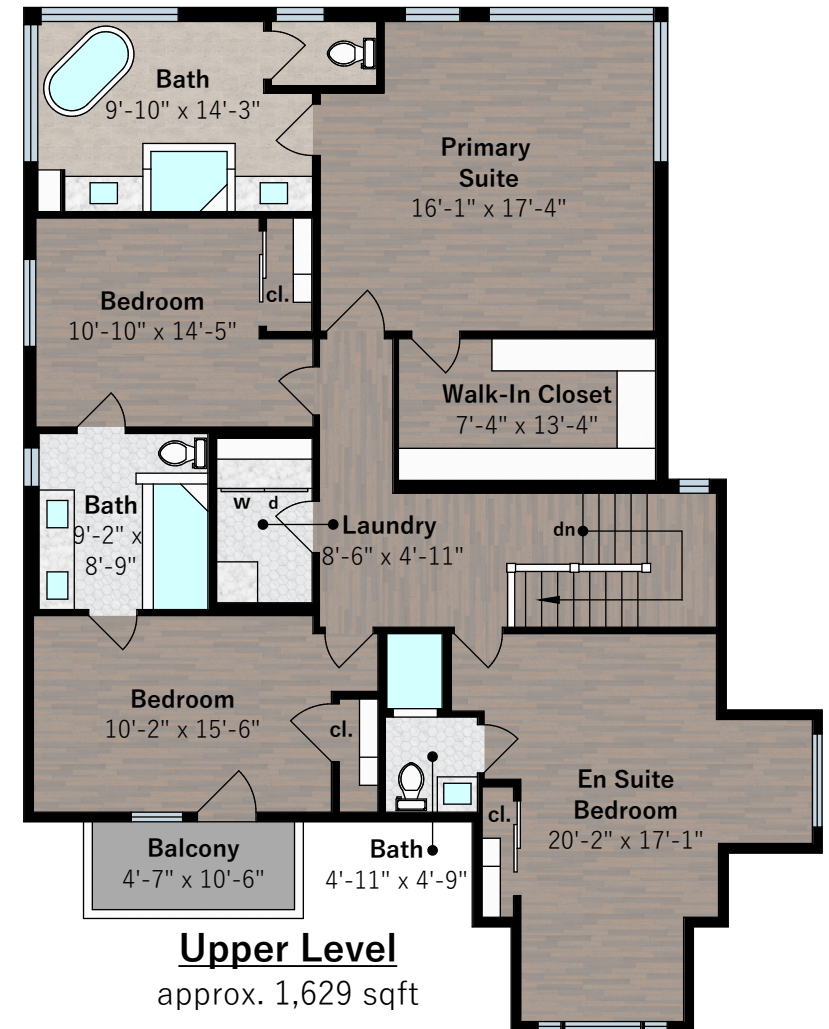
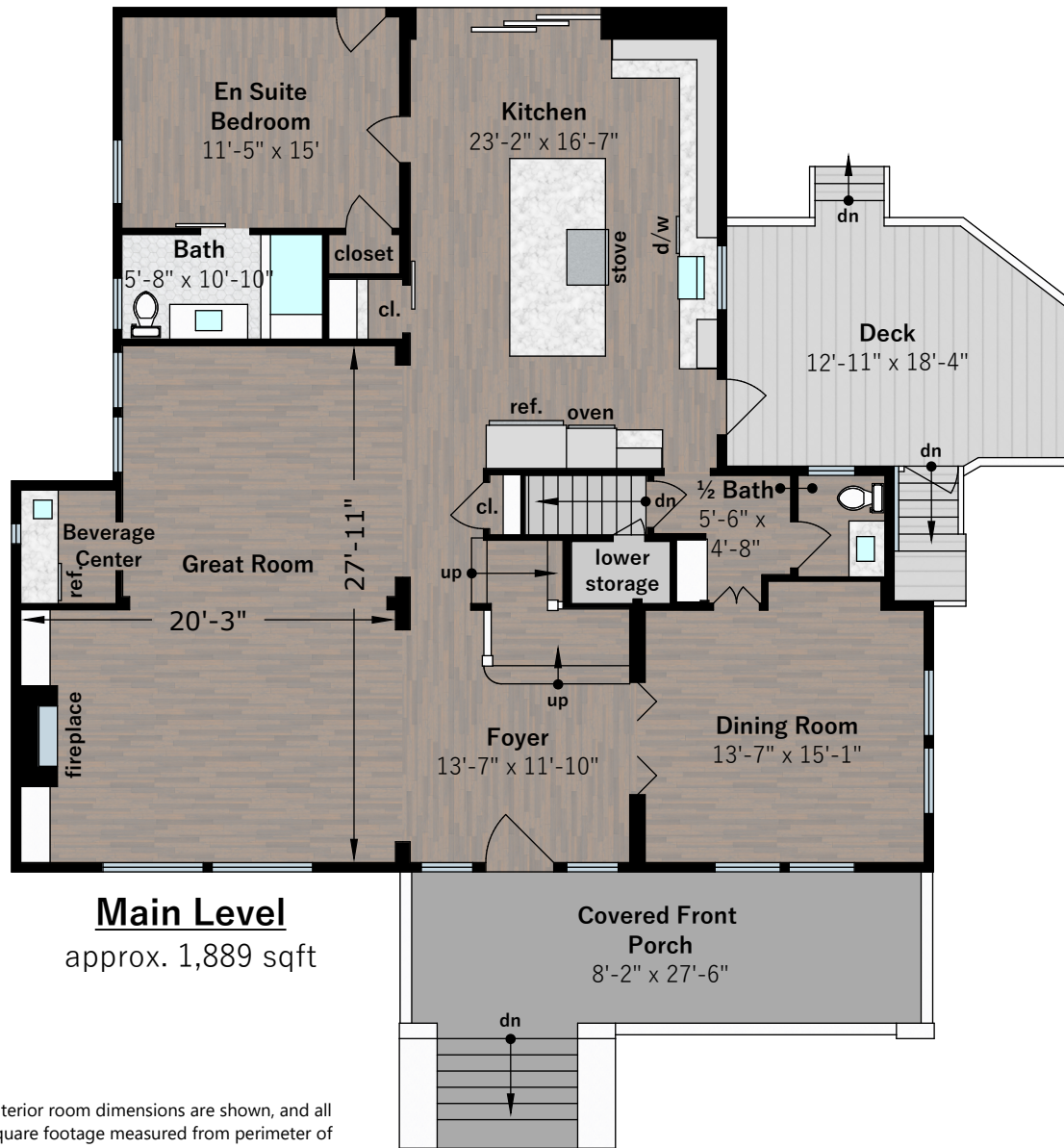


236 Hillside Avenue

Piedmont, CA 94611



Interior room dimensions are shown, and all square footage measured from perimeter of exterior walls. Decks, porches, and patios are not included in calculations.
Measured on April 16th, 2023

Estimated Total Finished Square Footage: 5,038 sqft
Main Residence: 3,518 sqft
Guest House: 915 sqft
Carriage House: 605 sqft

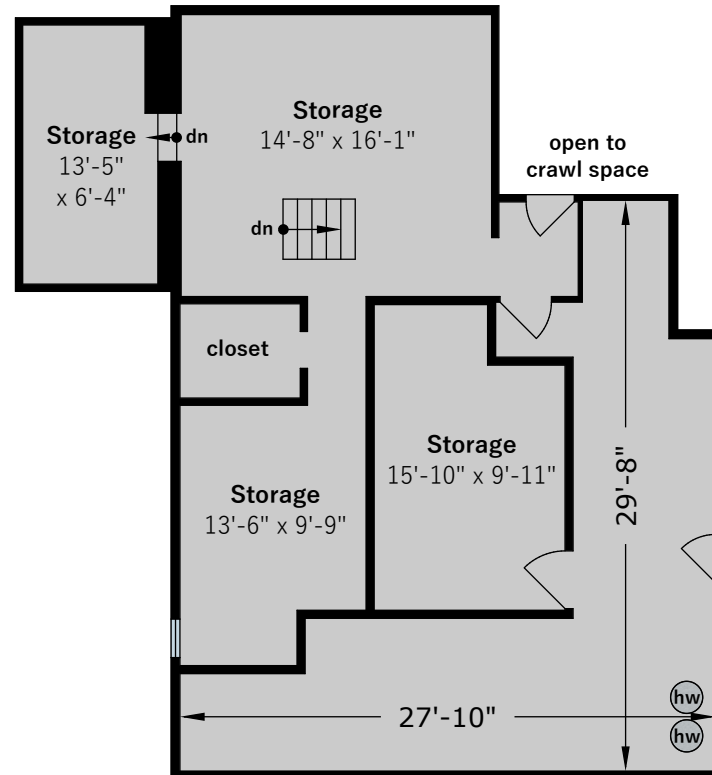
Estimated Total Unfinished Square Footage: 1,665 sqft
Main Residence: 1,102 sqft
Carriage House: 563 sqft

Any and all information on this drawing is for illustrative purposes only and is deemed reliable, but not guaranteed.
All information requires independent verification.

Listed By: **Jane Strauch**
jane@janestrauch.com

236 Hillside Avenue

Piedmont, CA 94611



Lower Level

approx. 1,102 sqft

Interior room dimensions are shown, and all square footage measured from perimeter of exterior walls. Decks, porches, and patios are not included in calculations.

Measured on April 16th, 2023

**Estimated Total Finished
Square Footage: 5,038 sqft**

Main Residence: 3,518 sqft
Guest House: 915 sqft
Carriage House: 605 sqft

**Estimated Total Unfinished
Square Footage: 1,665 sqft**

Main Residence: 1,102 sqft
Carriage House: 563 sqft

Any and all information on this drawing is for illustrative purposes only and is deemed reliable, but not guaranteed. All information requires independent verification.

Listed By: **Jane Strauch**

jane@janestrauch.com

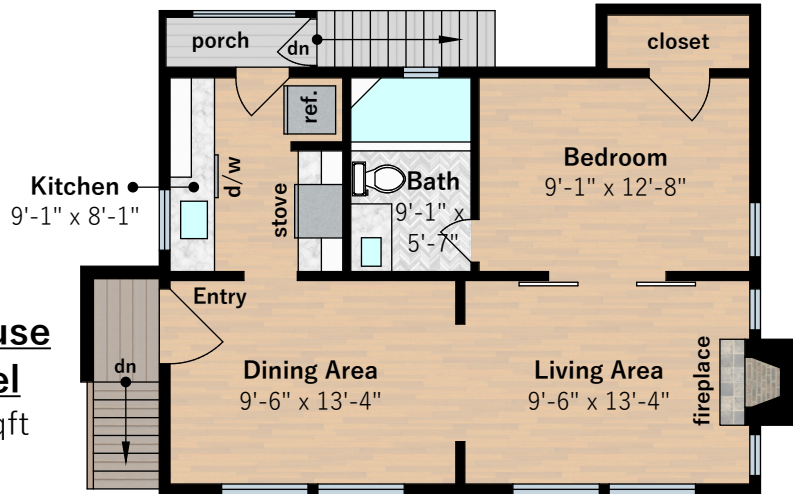
Interior room dimensions are shown, and all square footage measured from perimeter of exterior walls. Decks, porches, and patios are not included in calculations.
Measured on April 16th, 2023

236 Hillside Avenue

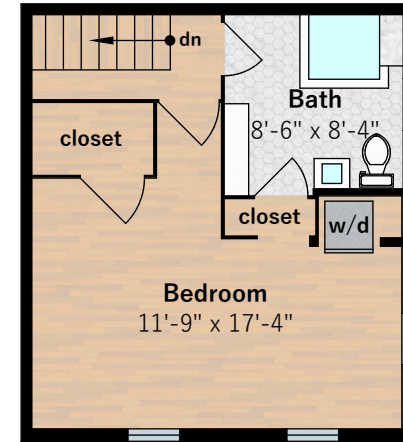
Piedmont, CA 94611



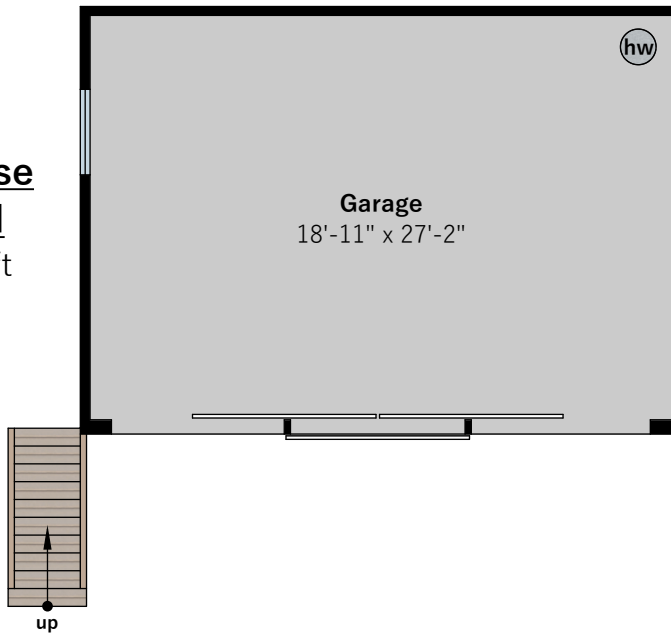
Carriage House
Upper Level
approx. 605 sqft



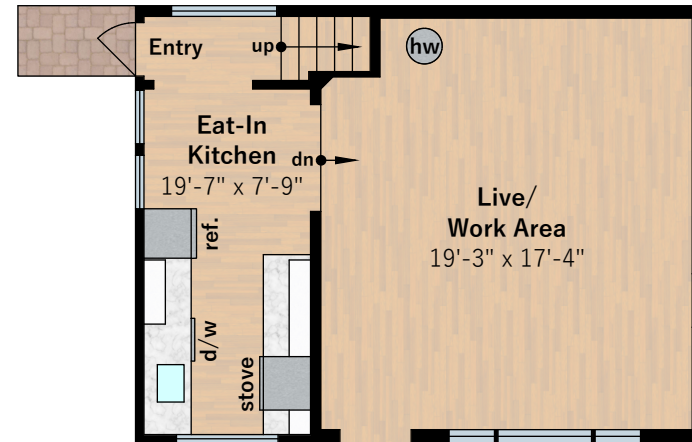
Guest House
Upper Level
approx. 374 sqft



Carriage House
Lower Level
approx. 563 sqft



Guest House
Lower Level
approx. 541 sqft



**Estimated Total Finished
Square Footage: 5,038 sqft**

Main Residence: 3,518 sqft
Guest House: 915 sqft
Carriage House: 605 sqft

**Estimated Total Unfinished
Square Footage: 1,665 sqft**

Main Residence: 1,102 sqft
Carriage House: 563 sqft