



2217 PARKER STREET BERKELEY

PROPERTY SQ FT INFORMATION

MEASUREMENTS CALCULATED TO THE EXTERIOR WALLS

LIVING SPACE: 2651 SQ FT

- * Main Level (Main House): 1640 Sq Ft
- * Upper Level (Unit 2A): 603 Sq Ft
- * Guest Studio (above Garage): 408 Sq Ft

NON-LIVING SPACE: 2545 SQ FT

- * Basement Level: 1312 Sq Ft
- * Art Studio/Gallery: 813 Sq Ft
- * Garage: 420 Sq Ft

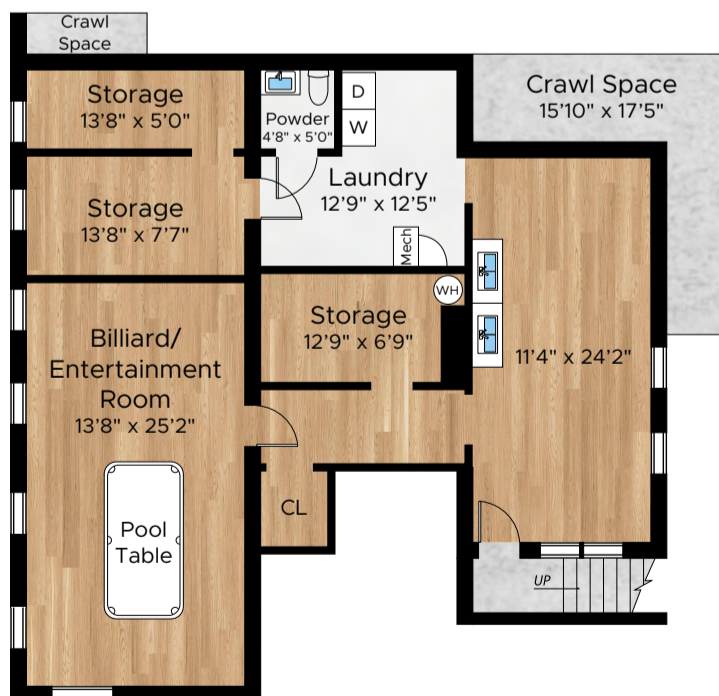
COMBINED: 5196 SQ FT



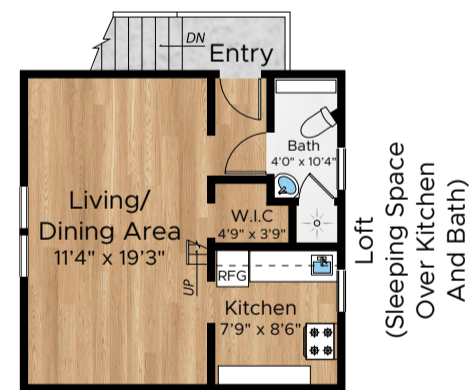
Main Level
(Main House)



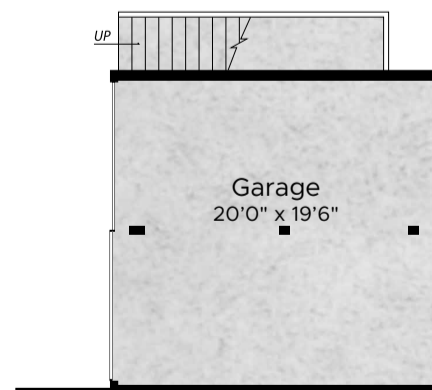
Upper Level
(Main House)



Basement Level
(Main House)



Guest Studio
(above Garage)



PRESENTED BY : LEIF JENSSEN/ TAMIR MANSOUR

DRE #: 01182699 (LEIF JENSSEN)

DISCLAIMER: RENDERING BY OPEN HOMES PHOTOGRAPHY. ALL MEASUREMENTS ARE APPROXIMATE AND MAY NOT BE EXACT.
DO NOT RELY ON THE ACCURACY OF THIS FLOOR PLAN WHEN DETERMINING THE PRICE OF A PROPERTY OR MAKING DECISIONS
REGARDING BUYING OR SELLING OF PROPERTIES WITHOUT INDEPENDENT VERIFICATION.