

18865 WALNUT ROAD

CASTRO VALLEY

PROPERTY SQ FT INFORMATION

MEASUREMENTS CALCULATED TO THE EXTERIOR WALLS

LIVING SPACE: 2189 SQ FT

* Main House (Main Floor): 2189 Sq Ft

NON-LIVING SPACE: 1417 SQ FT

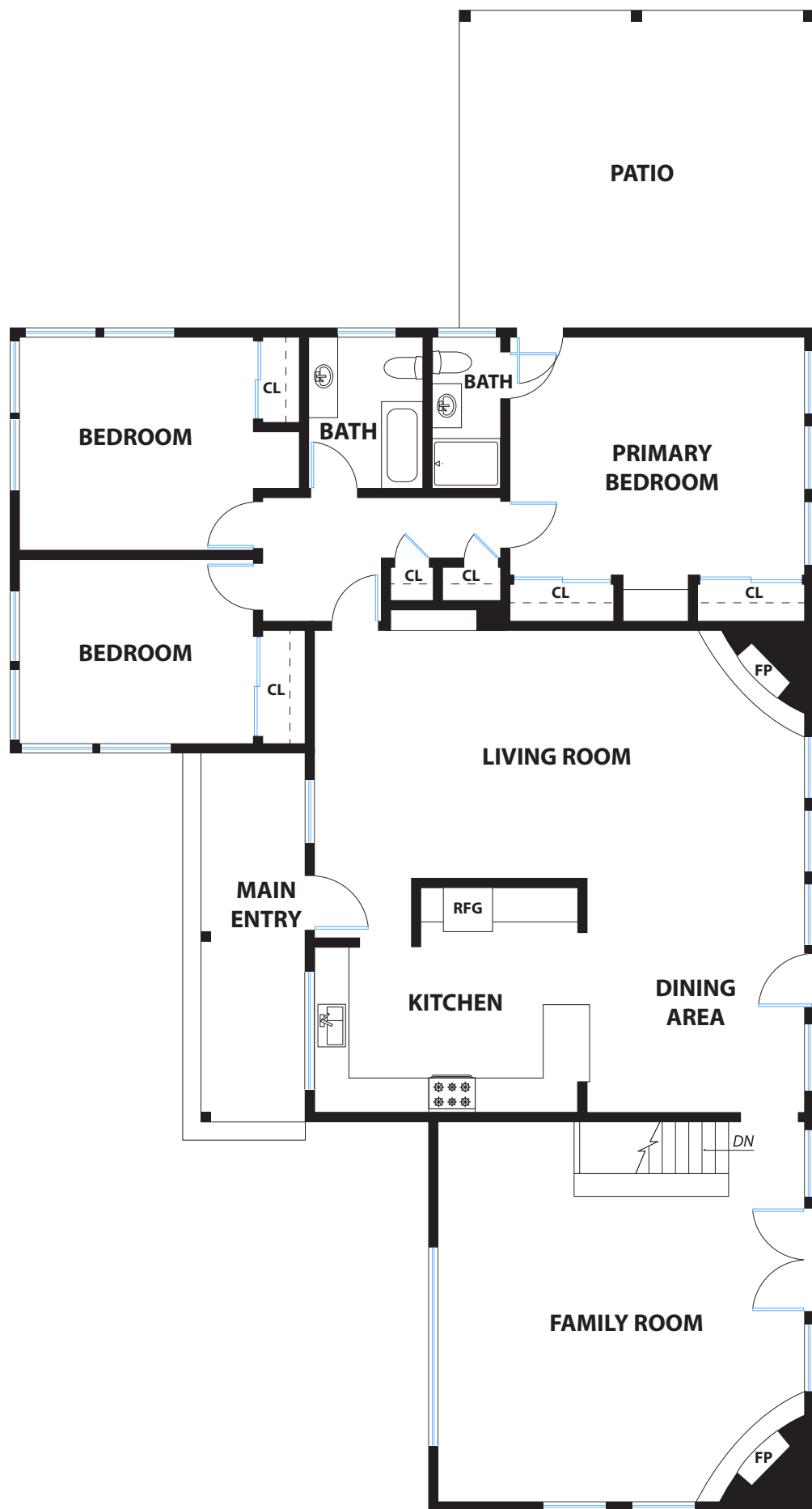
* Main House Main Floor Garage: 545 Sq Ft

* Main House Main Floor Patio: 359 Sq Ft

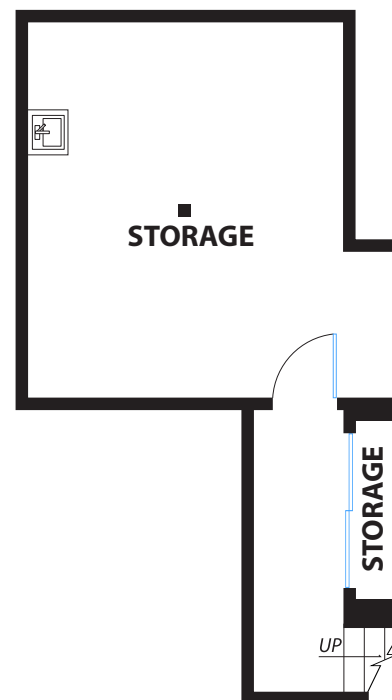
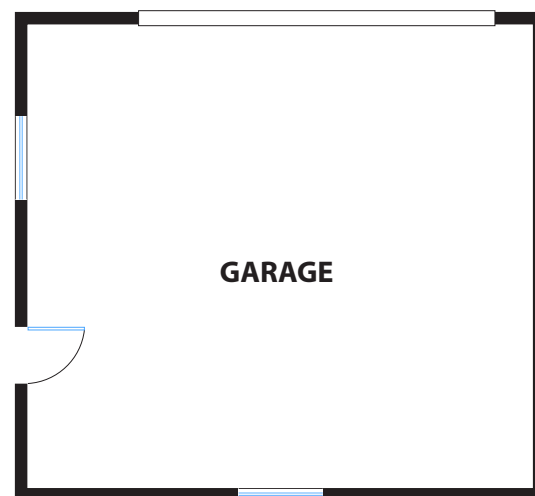
* Main House Main Floor Main Entry: 124 Sq Ft

* Main House Lower Floor: 389 Sq Ft

COMBINED: 3606 Sq Ft



MAIN FLOOR



LOWER FLOOR

PRESENTED BY : LAURA ARECHIGA
DRE #: 01388149

DISCLAIMER: RENDERING BY OPEN HOMES PHOTOGRAPHY. ALL MEASUREMENTS ARE APPROXIMATE AND MAY NOT BE EXACT. DO NOT RELY ON THE ACCURACY OF THIS FLOOR PLAN WHEN DETERMINING THE PRICE OF A PROPERTY OR MAKING DECISIONS REGARDING BUYING OR SELLING OF PROPERTIES WITHOUT INDEPENDENT VERIFICATION.