

16 MARLBOROUGH COURT

PIEDMONT

PROPERTY SQ FT INFORMATION

MEASUREMENTS CALCULATED TO THE EXTERIOR WALLS

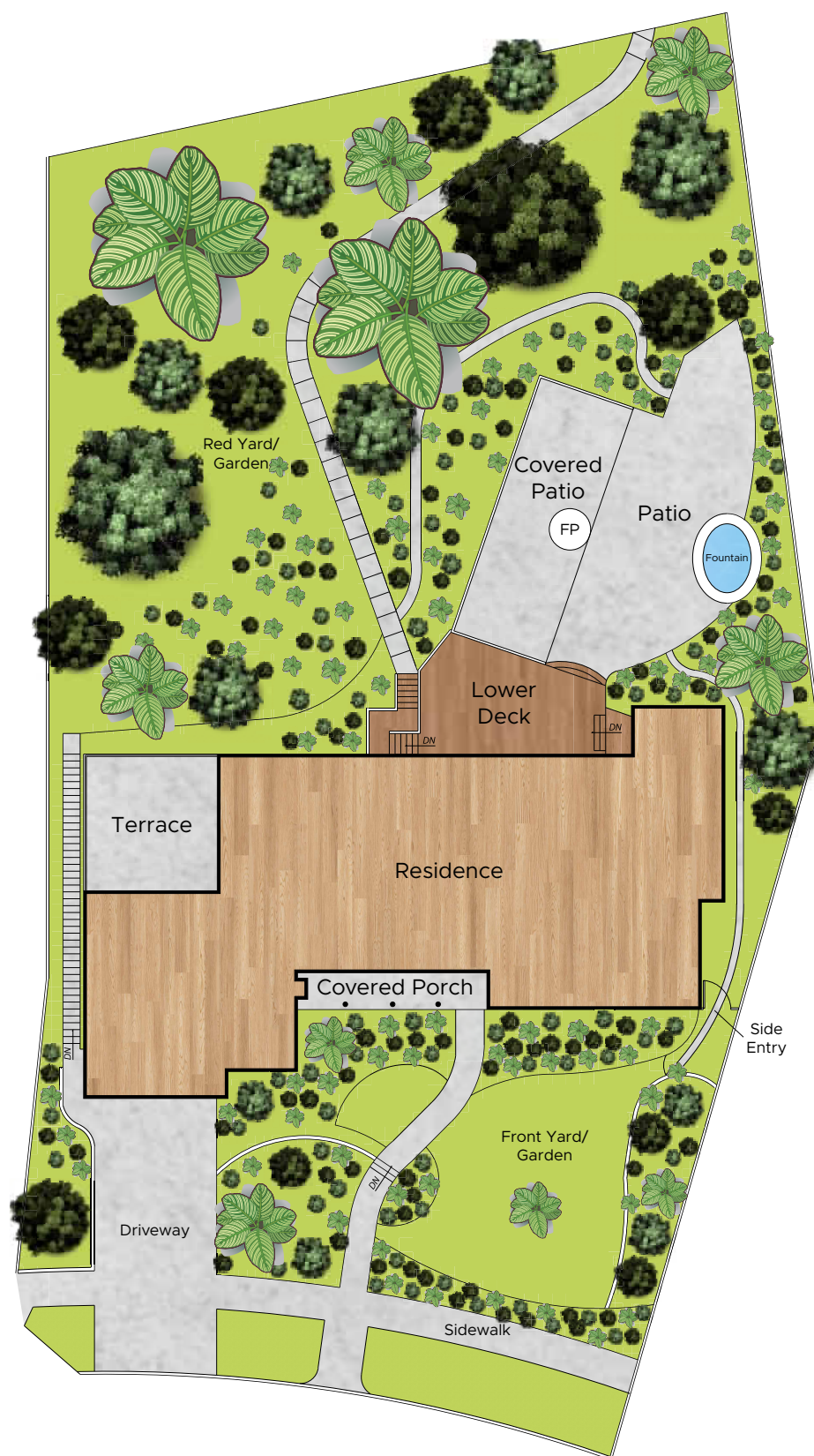
LIVING SPACE: 4466 SQ FT

- * Main Level: 2826 Sq Ft
- * Lower Level: 1640 Sq Ft

NON-LIVING SPACE: 1500 SQ FT

- * Garage: 466 Sq Ft
- * Terrace: 385 Sq Ft
- * Storage Room 1-3: 433 Sq Ft
- * Wine Cellar Level: 216 Sq Ft

COMBINED: 5966 Sq Ft



DISCLAIMER: RENDERING BY OPEN HOMES PHOTOGRAPHY. ALL MEASUREMENTS ARE APPROXIMATE AND MAY NOT BE EXACT.

DO NOT RELY ON THE ACCURACY OF THIS FLOOR PLAN WHEN DETERMINING THE PRICE OF A PROPERTY OR MAKING DECISIONS REGARDING BUYING OR SELLING OF PROPERTIES WITHOUT INDEPENDENT VERIFICATION.