

S

Bill Smith

Ann Aylwin

A

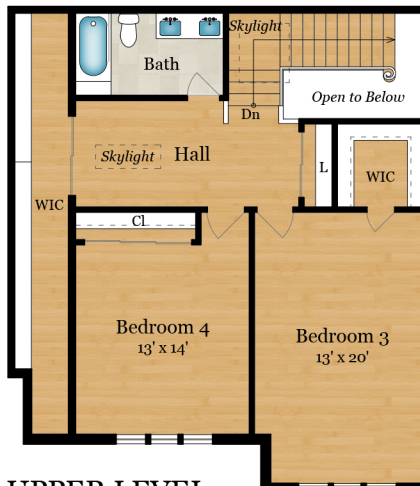
86 ST THOMAS WAY

TIBURON, CA 94920



MAIN LEVEL

2,640 SQ FT



UPPER LEVEL

985 SQ FT

Estimated Total Finished Square Footage: 3,625 SQ FT

Above-Grade: 3,625 SQ FT Below-Grade: N/A
Plus 655 SQ FT 3-Car Garage on Main Level
Calculated per ANSI Standard Z765-2021.

* Estimated Total Finished & Unfinished Square Footage: 4,280 SQ FT

