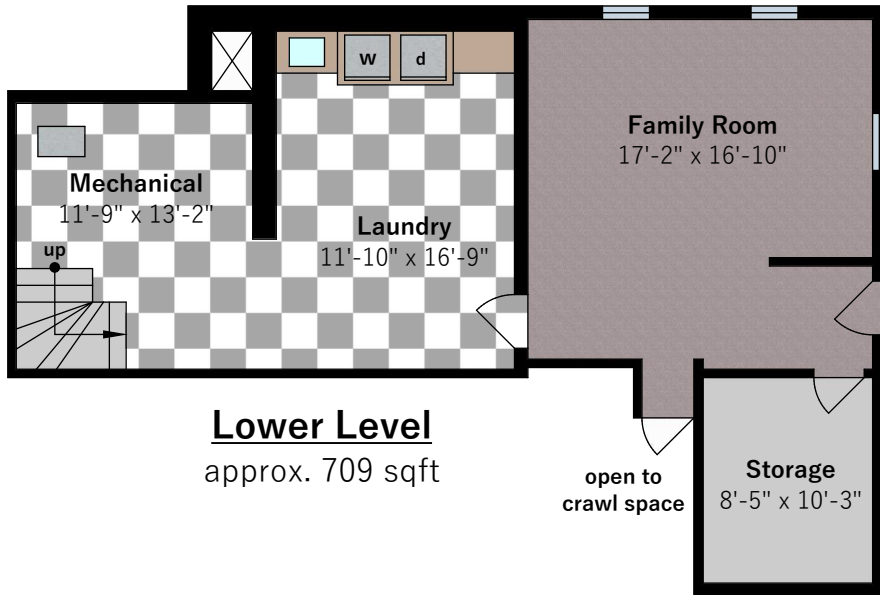
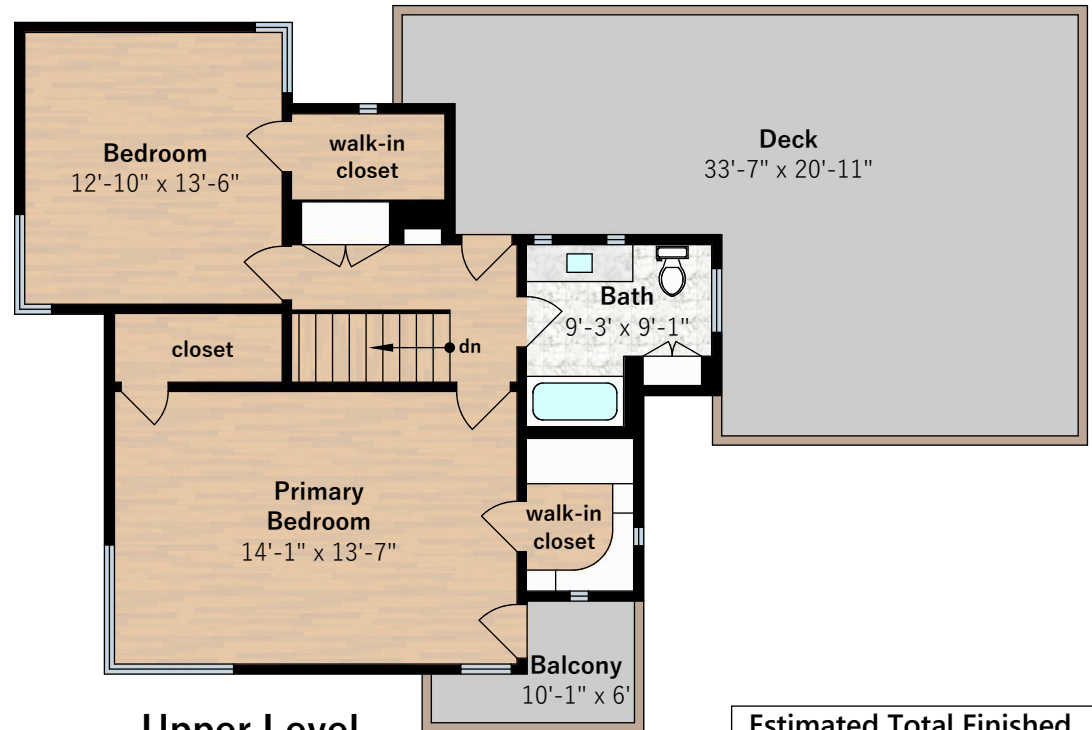


5700 Chelton Drive

Oakland, CA 94611



Lower Level
approx. 709 sqft



Upper Level
approx. 811 sqft

Estimated Total Finished Square Footage: 3,049 sqft

Lower Level: 709 sqft
Main Level: 1,529 sqft
Upper Level: 811 sqft

Estimated Total Unfinished Square Footage: 390 sqft

Garage: 390 sqft

Interior room dimensions are shown, and all square footage measured from perimeter of exterior walls. Decks, porches, and patios are not included in calculations.
Measured on March 27th, 2026

Any and all information on this drawing is for illustrative purposes only and is deemed reliable, but not guaranteed. All information requires independent verification.

Listed By: **Dan Walner**
danwalnerhomes.com

