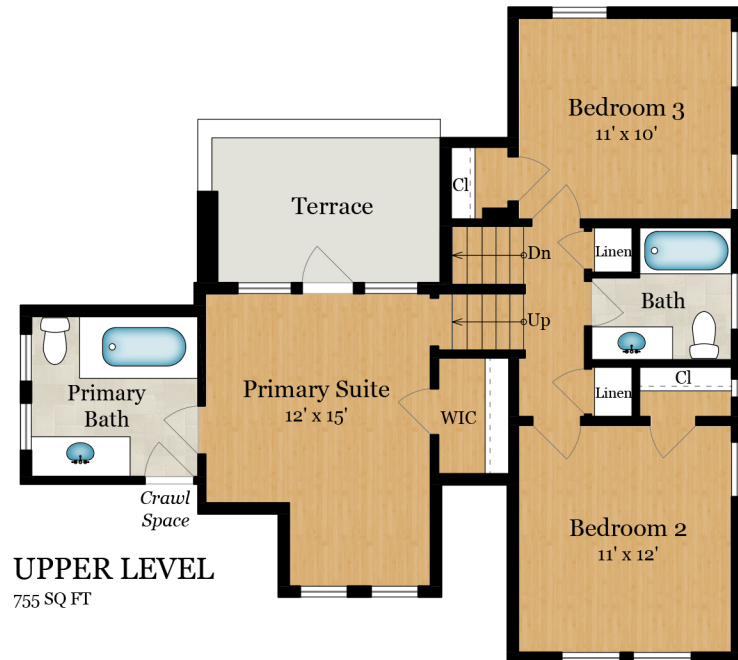


46 AUSTIN AVENUE

SAN ANSELMO, CA 94960



MAIN LEVEL
945 SQ FT



UPPER LEVEL
755 SQ FT

**Estimated Total Finished
Square Footage: 1,700 SQ FT**

Above-Grade: 1,700 SQ FT Below-Grade: N/A

Plus 395 SQ FT Garage on Main Level

Calculated per ANSI Standard Z765-2021.

* Estimated Total Finished & Unfinished Square Footage: 2,095 SQ FT

