

41 Kellie Ann Court

Orinda, CA 94563

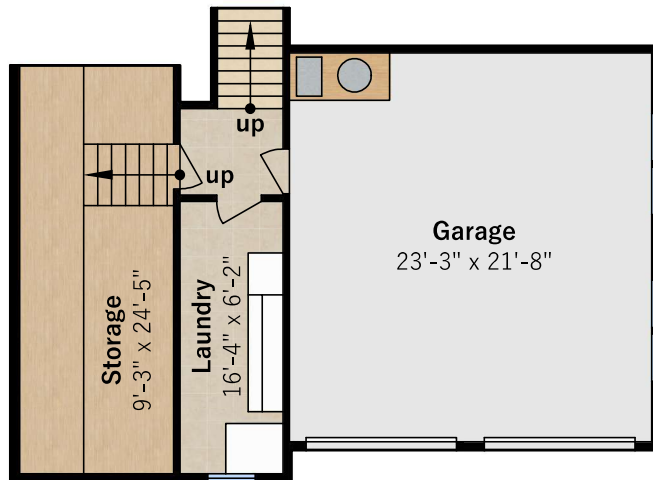


Main Level
approx. 2,649 sqft

Estimated Total Finished Square Footage: 3,620 sqft
Main Level: 2,649 sqft
Lower Laundry: 140 sqft
Guest House: 831 sqft

Estimated Total Unfinished Square Footage: 1,536 sqft
Main House Garage: 545 sqft
Guest House Garage: 628 sqft
Main House Storage: 253 sqft
Garden Shed: 110 sqft

Interior room dimensions are shown, and all square footage is measured from outside perimeter of exterior walls. Decks, porches, and patios are not included in square footage calculations. Any and all information on this drawing is for illustrative purposes only and is deemed reliable, but not guaranteed. All information requires independent verification.
Measured on September 26, 2025



Lower Level
Laundry: 140 sqft
Garage: 545 sqft
Storage: 253 sqft

Any and all information on this drawing is for illustrative purposes only and is deemed reliable, but not guaranteed. All information requires independent verification.

Listed By: **Dan Walner & Jen Moeller**

Compass | www.danwalnerhomes.com | www.jenmoellerhomes.com